



Duquesne Light Holdings, Inc.

Appalachian Sustainable Finance Hub

Powering the Transition to Electric Mobility

Introducing DLC's "EV Team"

What we do

Aligned with DLC's mission to create a clean energy future for all, we empower all our customers to experience the benefits of electric mobility.

How we do it

We serve as a trusted partner, offering innovative products and services that optimize the use of our grid to advance the electric transportation market across our service territory.



Sarah Oleksak
Senior Manager



Emily Phan-Gruber
Senior Strategist



Matt McDonald
Senior Associate



Jessica Mooney
Project Developer



Hannah Moyer
Project Developer

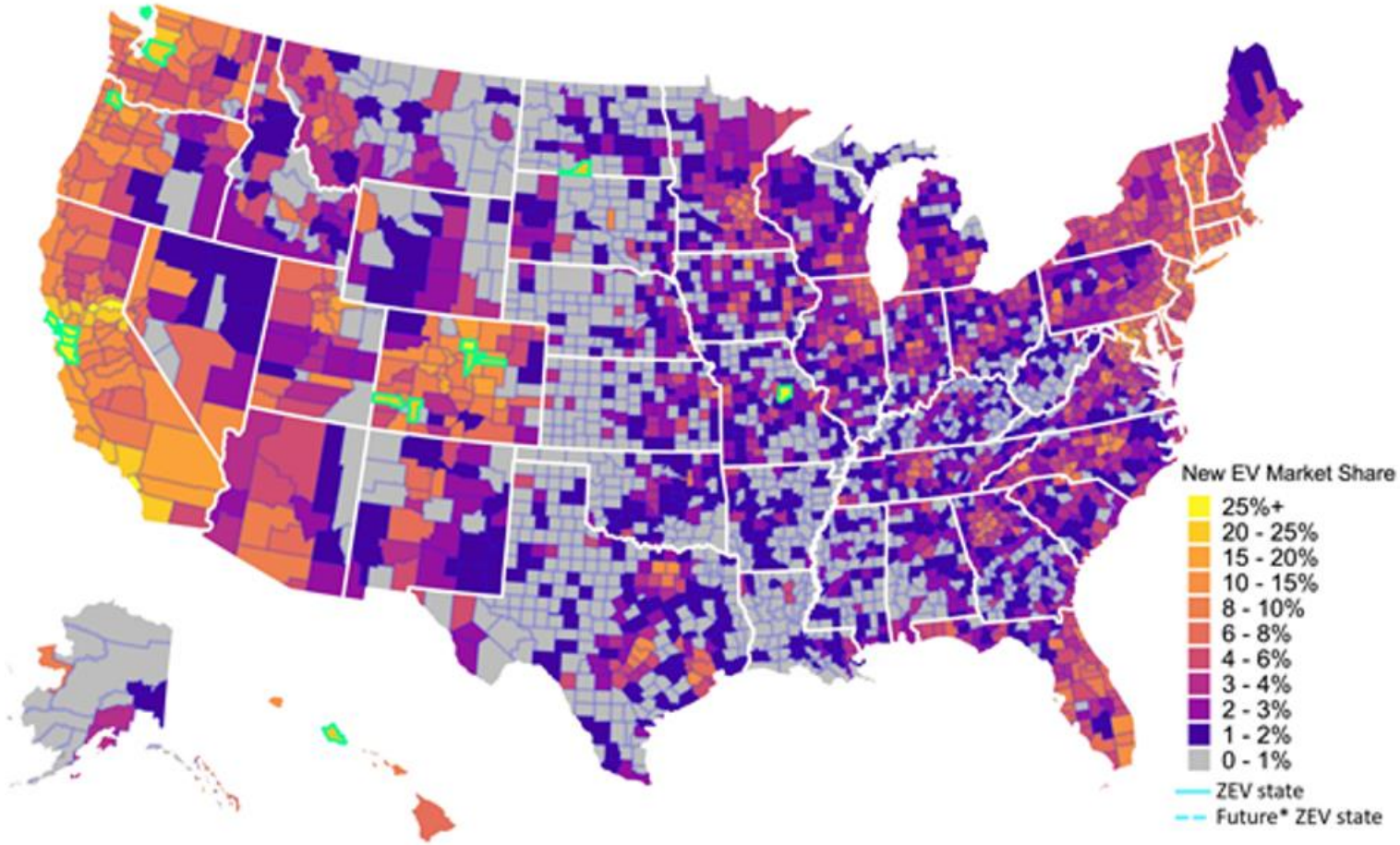


Bobby Lincoln
Project Associate



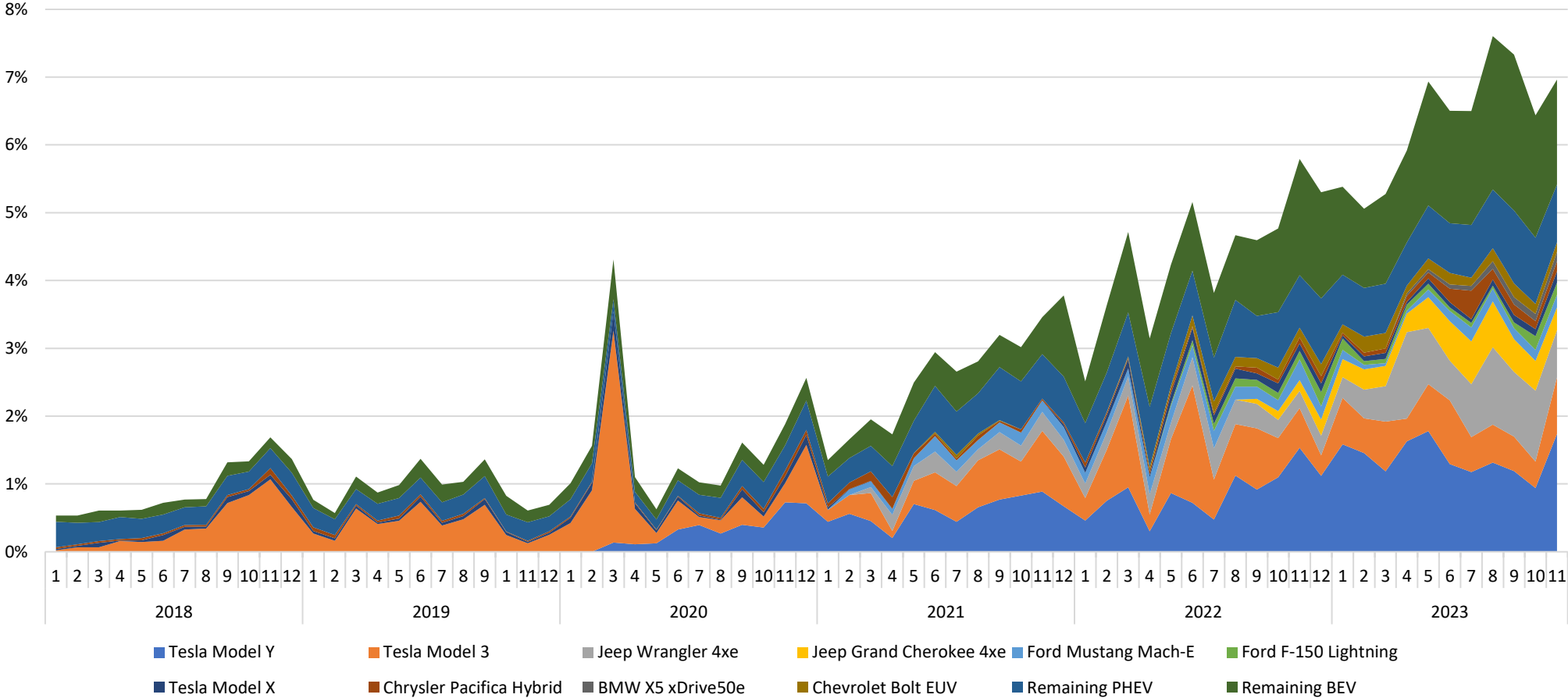
U.S. EV Share of New Vehicle Sales YTD Hits 9.3%

(Jan 1 through April 30, 2024)



Pennsylvania: New Registrations

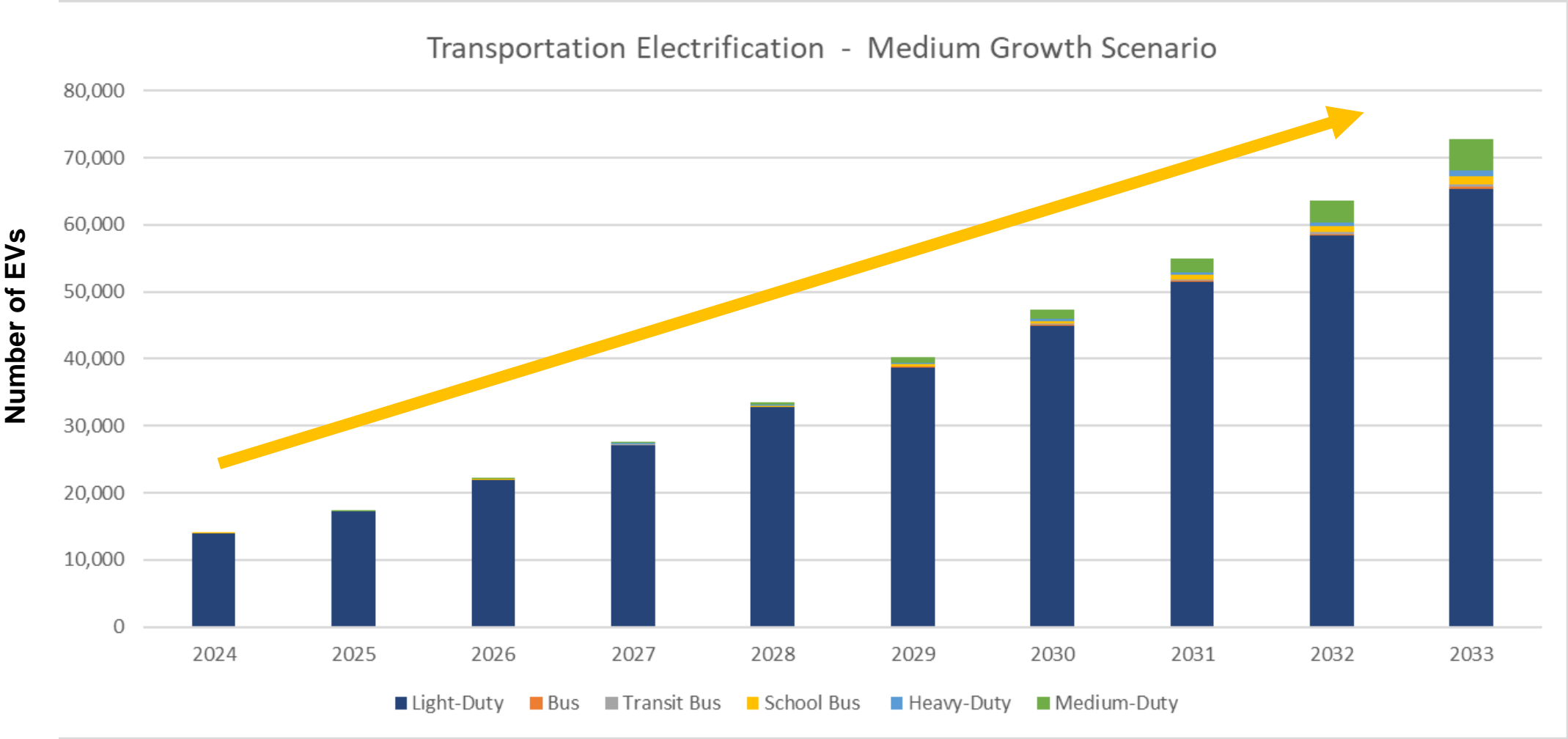
New Registration Share



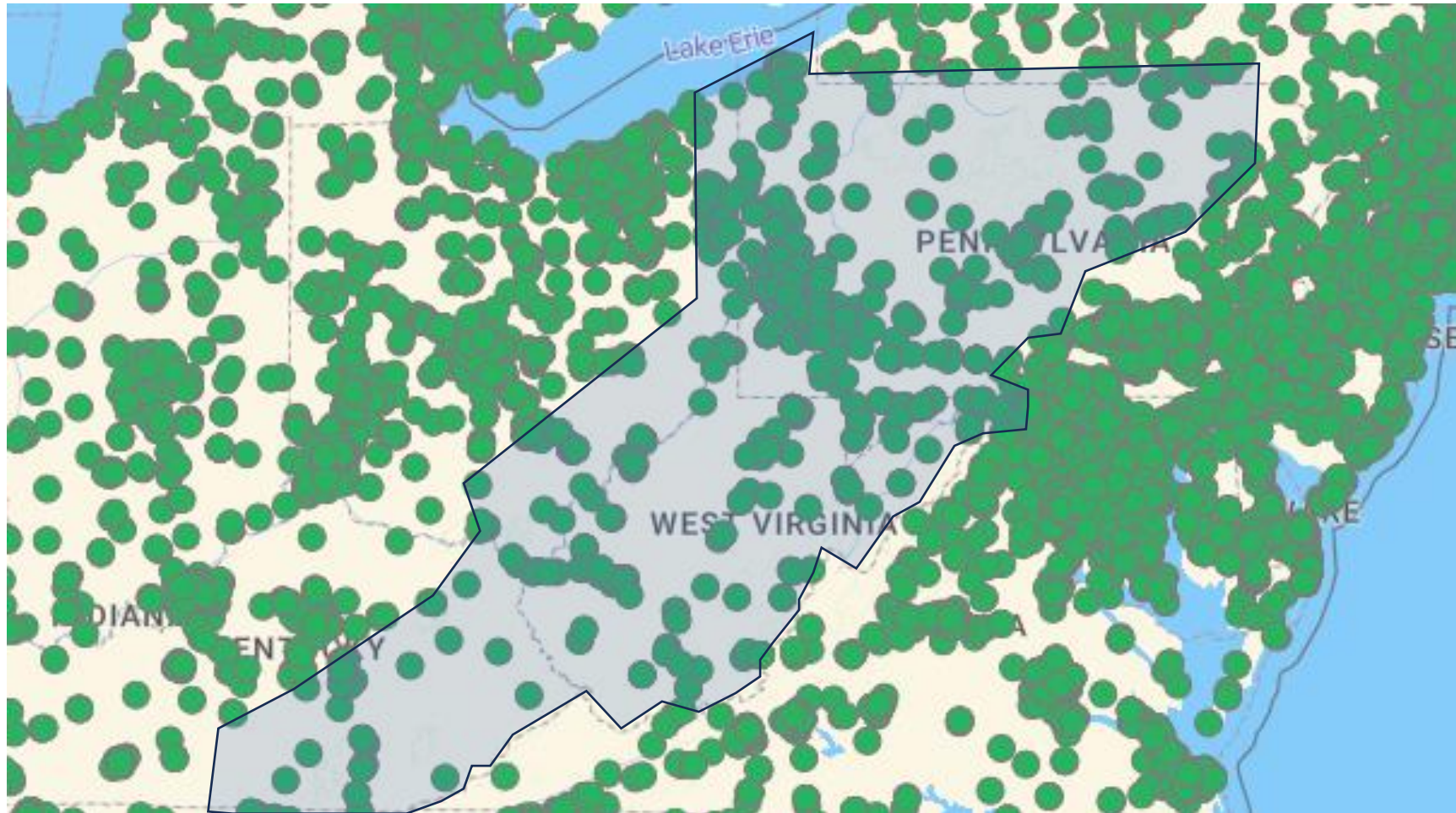
Source: EPRI analysis of Experian data as of November 2023.

Local Market Overview

Electric Vehicle Adoption is Rapidly Accelerating



Available EV Chargers



Source: DOE Alternative Fuel Data Center

More Charging is Needed

Level 2 Charging



- 25-40 miles of charge per 60 mins
- Wall-mounted or placed on pedestals
- AC240V; 15-20 kW per unit

Available Today	Needed by 2027
586	2,745

DC Fast Charging



- 60-100 miles of charge per 20 mins
- Commercial use only
- 50-350 kW per unit

Available Today	Needed by 2027
47	125

DLC Community & Fleet Charging Infrastructure Programs

Commercial EV Charging

Who is Eligible?

COMMUNITY EV CHARGING



PUBLIC

Parking areas that are open to the public, such as a business, community park, or municipal building.



WORKPLACE

Parking areas dedicated to employee parking, such as an employee parking lot or garage.



MULTI-FAMILY

Parking areas that are shared and open to all residents of a multi-family property, such as an apartment or condominium building.

FLEET EV CHARGING



FLEET

Fleets that are owned or operated by businesses, local governments, and non-profits such as school buses, inspector vehicles or shuttle services.



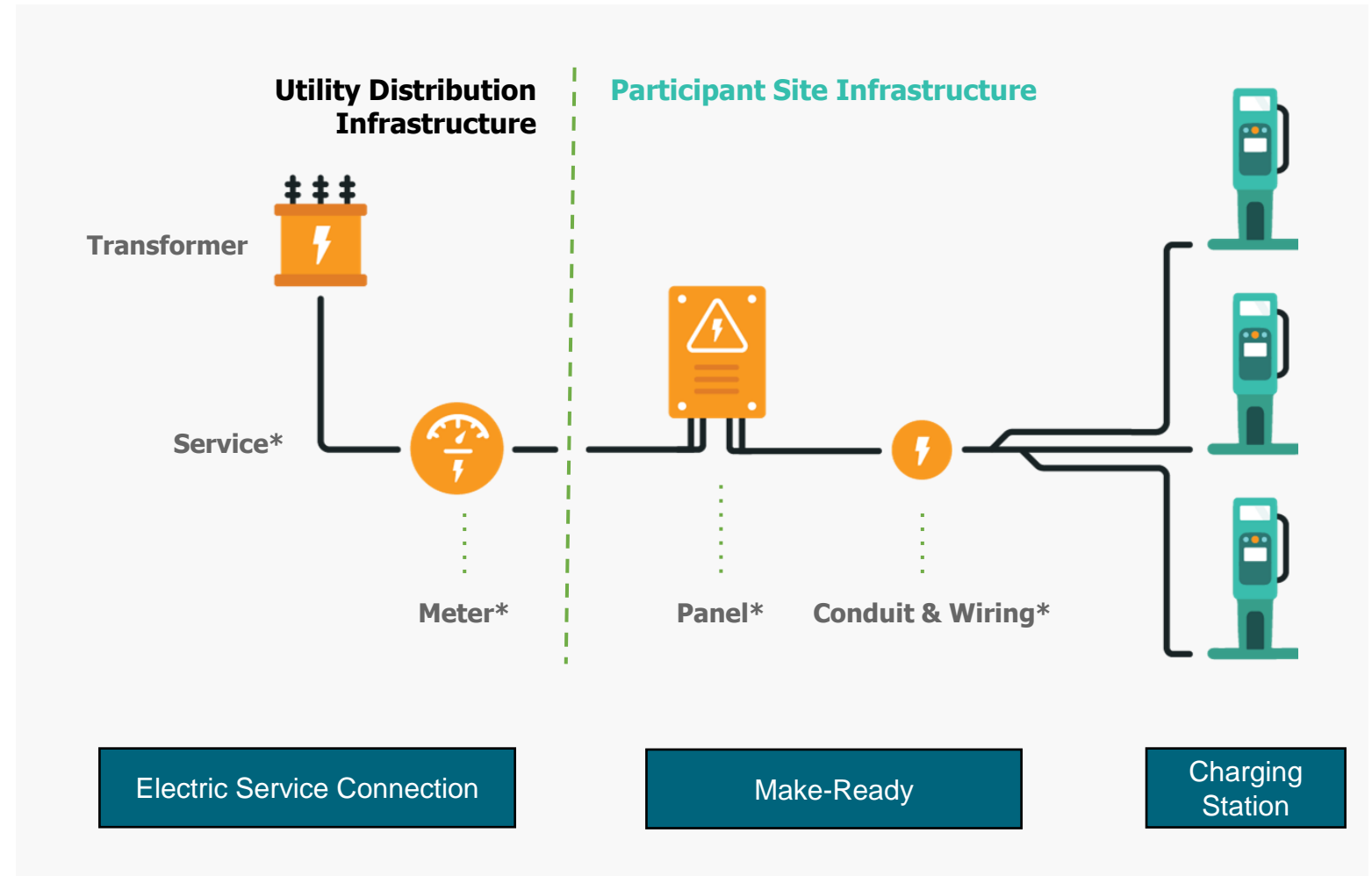
Duquesne Light Holdings, Inc.

DLC Community & Fleet Charging Infrastructure Programs

Commercial EV Charging

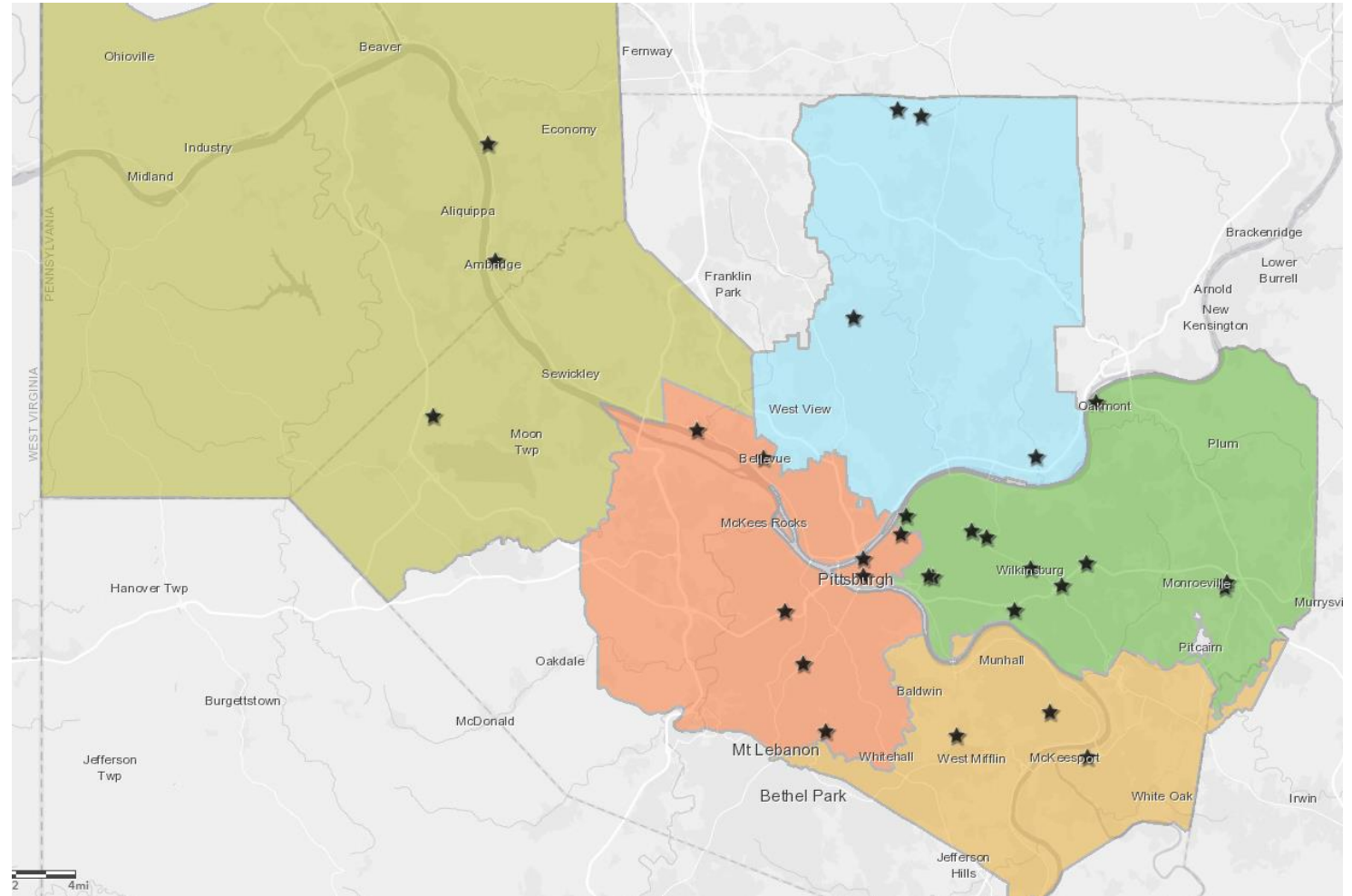
How does it work?

- ✓ DLC handles engineering, permitting, and construction of EV Charging “make-ready.”
- ✓ Provides additional rebates to fleet customers and sites in Environmental Justice Areas serving disadvantaged communities.



Map of Current DLC Lead Projects

- Approximately 35 projects and 230 ports energized to date
- Goal of 350 ports to be energized by the end of 2024



Business Models

Site Host as Owner/Operator

Advantages:

- Control over pricing and therefore can realize the full revenue of the stations.
- Have full control over the user's experience.

Disadvantage:

- Responsible for all maintenance and all operations.

Site Host with 3rd Party Owner/Operator

Advantages:

- Limits the site host's exposure to maintenance and operation costs.
- Involves having a lease agreement with the 3rd party. The lease could provide a consistent stream of revenue to the site host regardless of the use of the stations.

Disadvantage:

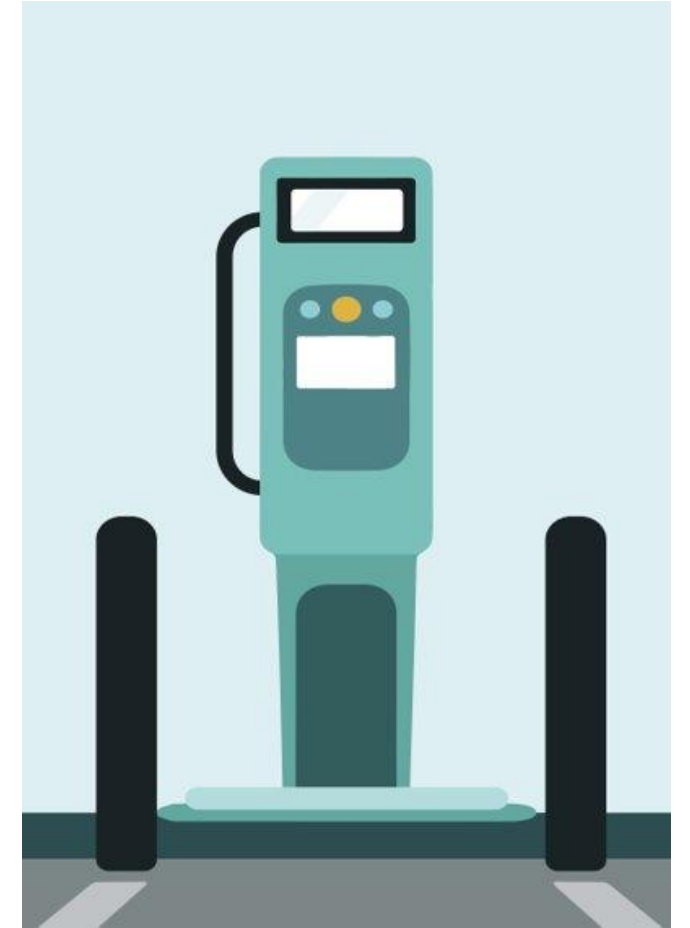
- Relinquish control over the user's experience.
- Won't realize the full revenue of the stations.



Charging Station Management

When installing charging stations, it is important to consider the following:

- **Accessibility:** Ensure your station setup complies with ADA and other local requirements.
- **Mounting:** Charging station units can be mounted on walls or pedestals.
- **Collision protection:** Protect your charging station with curbs, wheel stops, bollards, and/or setbacks.
- **Cord management:** Ensure cords can reach vehicles and don't interfere with pedestrian traffic.
- **Signage:** Mark EV parking stalls clearly with pavement markings and visible signage.
- **Security:** Use preventative strategies to avoid vandalism (motion detectors, security lighting, etc.).
- **Fee vs. Free:** Choose if and how you'd like to charge a fee for station users (flat fee, hourly rate, per kWh, etc.)
- **Promotion:** Ensure community members are aware charging is available.



Multi-Unit Dwelling Projects



Milhaus - Arsenal 201



McKinney Properties – Bryn Mawr Apartments



AR Building – Hamilton Place Apartments

Public Charging Projects



Oakmont Riverview Park

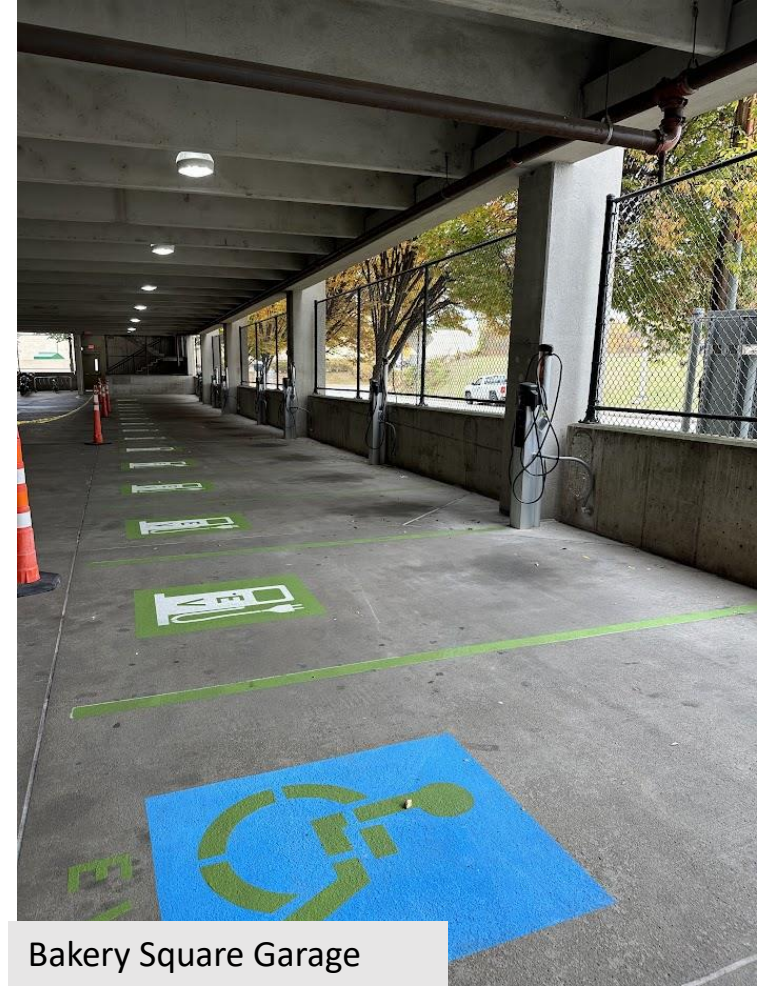


PPA Kirkwood Lot

Workplace Charging



Phipps Botanical Gardens

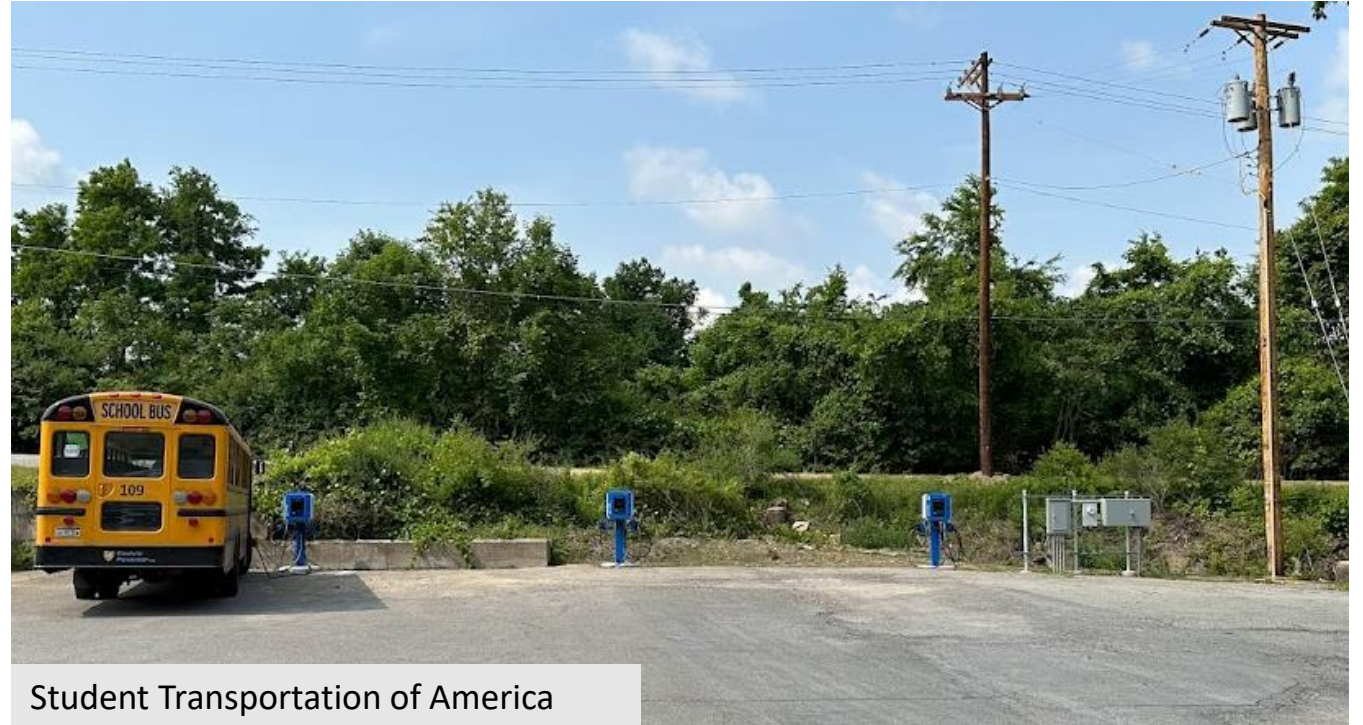


Bakery Square Garage

Fleet Charging



West Mifflin Borough



Student Transportation of America

Funding Opportunities

<http://afdc.energy.gov/laws>

U.S. DEPARTMENT OF **ENERGY** | Energy Efficiency & Renewable Energy

Alternative Fuels Data Center

FUELS & VEHICLES CONSERVE FUEL LOCATE STATIONS **LAWS & INCENTIVES** Maps & Data Case Studies

EERE » AFDC » Laws & Incentives

Federal and State Laws and Incentives

Find federal and state laws and incentives for alternative fuels and vehicles, air quality, fuel efficiency, and other transportation-related topics.

Federal [Recent Federal Actions](#)
[Key Federal Legislation](#)

State [Recent State Updates](#)
Local Examples
Utility Examples
West Virginia

Search
by category or keyword

See All
in summary tables

[Bipartisan Infrastructure Law](#)
[Inflation Reduction Act](#)

Tax Credits: Learn about the [federal tax credits](#) available for electric vehicles and charging infrastructure.

Clean Vehicle Standards: See which [states have adopted California's standards](#) for zero-emission vehicles, low-emission vehicles, and advanced clean trucks.

Search by Technology



EERE » AFDC » [Laws & Incentives](#) » State

Search

Federal

State

Local Examples

Utility Examples

Summary Tables

West Virginia Laws and Incentives

Listed below are incentives, laws, and regulations related to alternative fuels and advanced and Communities coalition, [West Virginia Clean Cities Coalition](#), can provide you with inform also access coalition and other agency contact information in the [points of contact](#) section.

Filter by Technology/Fuel

All selected

Filter by Utility

All selected

16 items

Laws and Incentives

Information in this list is [updated](#) throughout the year and comprehensively reviewed annua after West Virginia's [legislative session](#) ends.
Last Comprehensive Review: March 2024

State Incentives

- [West Virginia's National Electric Vehicle Infrastructure \(NEVI\) Planning](#)
- [Special Fuel Tax Exemption](#)
- [Alternative Fuel School Bus Incentive](#)
- [Idle Reduction Weight Exemption](#)

Utility/Private Incentives

- [Residential Electric Vehicle \(EV\) Charging Station Rebate - Appalachian Power](#)
- [Electric Vehicle \(EV\) Time-Of-Use \(TOU\) Rate - Appalachian Power Company](#)
- [Electric Vehicle \(EV\) Infrastructure Support](#)

Laws and Regulations

- [Alternative Fuel Vehicle Fee](#)
- [Alternative Fuel Production Subsidy Prohibition](#)
- [Alternative Fuels Tax](#)
- [Idle Reduction Requirement](#)
- [Public Utility Definition](#)
- [Alternative Fuel Use Requirement](#)
- [Low-Speed Vehicle Access to Roadways](#)
- [Automated Vehicle \(AV\) Operation Requirements](#)
- [Mid-Atlantic Region Electric Vehicle \(EV\) Support](#)



Duquesne Light Holdings, Inc.

Alternative Fuel Vehicle Refueling Property Tax Credit

www.irs.gov

- Tax-exempt organizations, **including local governments**, qualify using elective pay
- **Up to 30% credit** on the installation and hardware of EV charging (max credit of \$100k)
- Eligible census tracts are qualified as **low-income or non-urban areas** (Shown [here](#))
- Ensure prevailing wage and apprenticeship requirements are met to receive full 30%.

